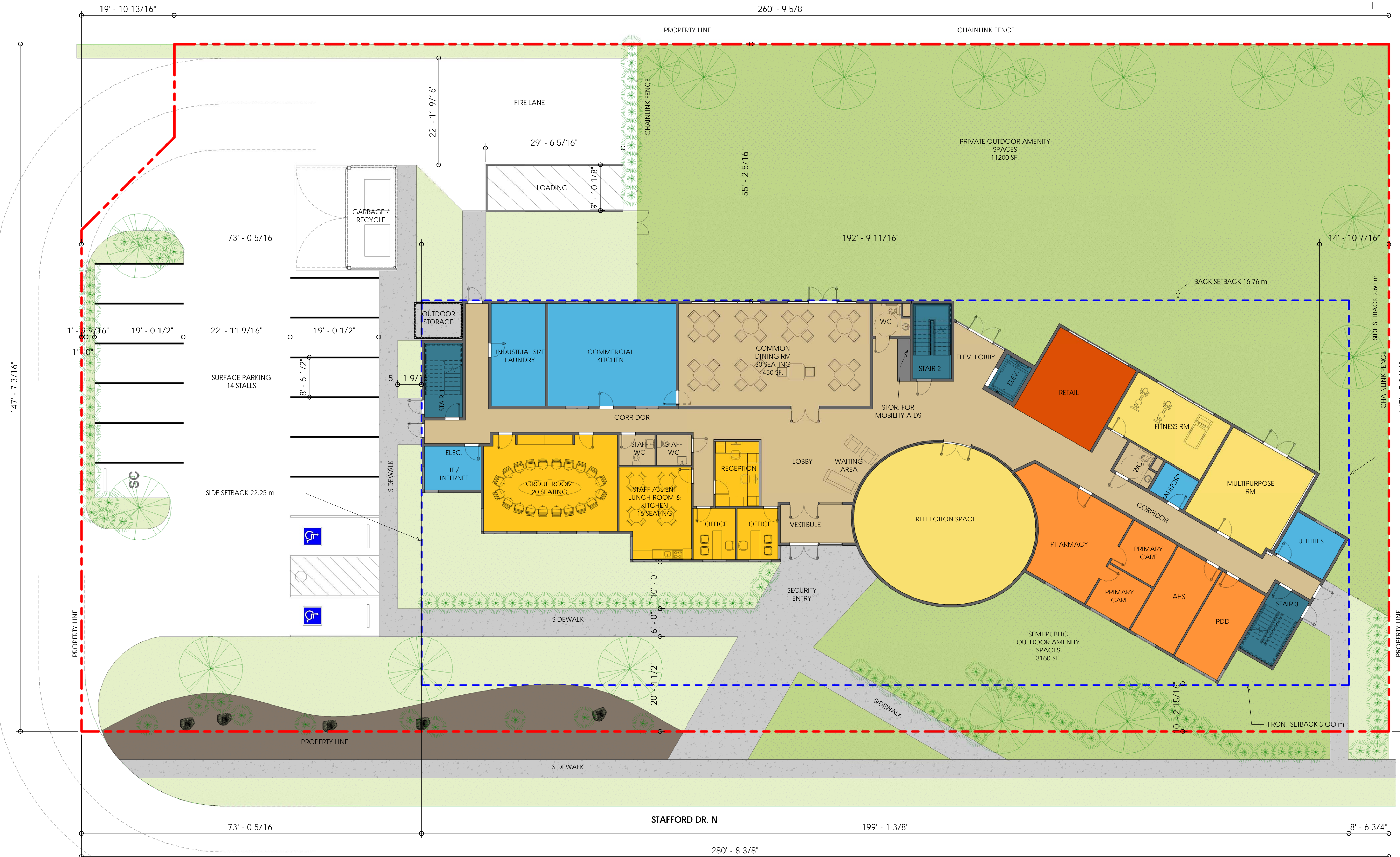
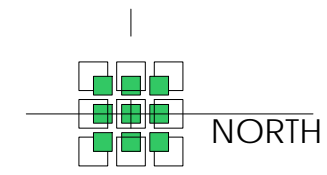


# LETHBRIDGE HOUSING AUTHORITY - SUPPORTIVE HOUSING



VICINITY MAP

1 MAIN FLOOR  
3/32" = 1'-0"

**PROJECT INFORMATION**

SITE AREA:	40,732 SF.
NUMBER OF STOREY:	3
GFA:	26,054.66 SF.
BASEMENT GFA:	1597 SF.
FAR:	0.64
SITE COVERAGE:	24.9%
SETBACKS:	
FRONT:	3.00 M
SIDE:	2.6 M
REAR:	16.76 M

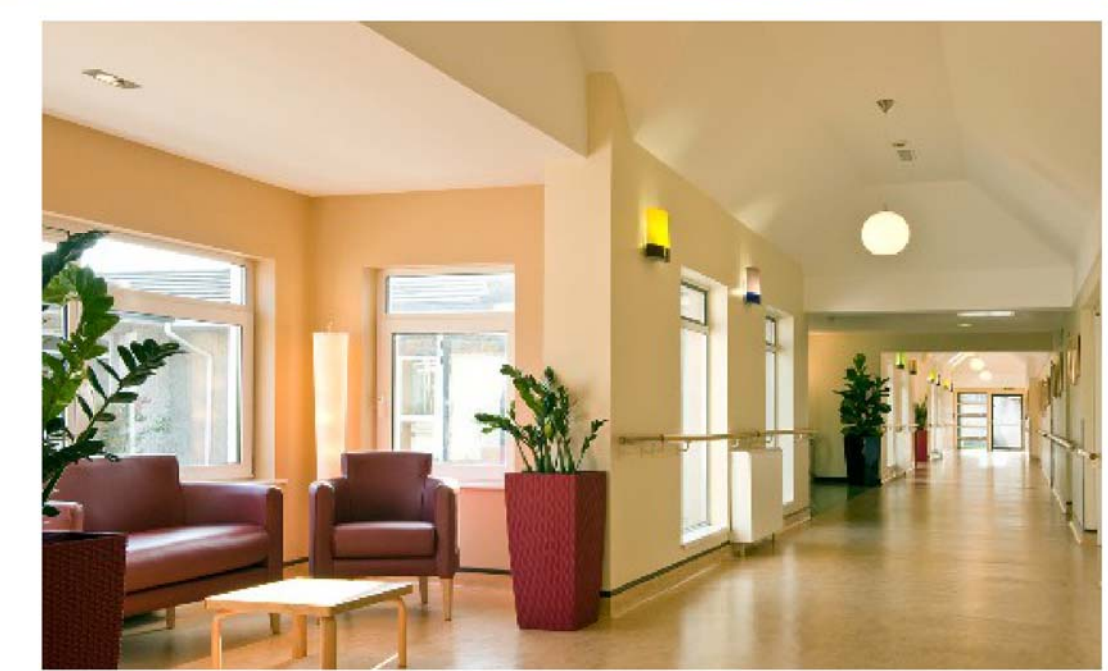
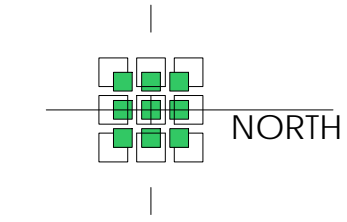
NUMBER OF UNITS PROVIDED:	30
BACHELOR - WITH BARRIER FREE BATHROOM:	8
BACHELOR :	22
NUMBER OF PARKING STALLS REQUIRED:	13
NUMBER OF PARKING STALLS PROVIDED:	14
HANDICAPPED PARKING STALL PROVIDED:	2
LOADING STALL PROVIDED:	1

**LEGEND:**

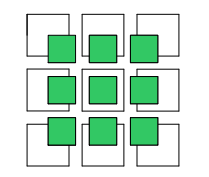
	INDOOR AMENITY SPACES		RETAIL
	COMMON SPACES		UNITS
	ADMIN. & PROGRAM SUPPORT SERVICES		BUILDING OPERATIONS
	HEALTH SERVICES		CIRCULATION SPACES



# LETHBRIDGE HOUSING AUTHORITY - SUPPORTIVE HOUSING



PRECEDENT IMAGES



# LETHBRIDGE HOUSING AUTHORITY - SUPPORTIVE HOUSING



BIRDVIEW PERSPECTIVE

# LETHBRIDGE HOUSING AUTHORITY - SUPPORTIVE HOUSING



STAFFORD DR. PERSPECTIVE (VIEW FROM SOUTHEAST)

# LETHBRIDGE HOUSING AUTHORITY - SUPPORTIVE HOUSING



STAFFORD DR. PERSPECTIVE (VIEW FROM NORTHEAST)